

Annex F3

Monitoring Results for Noise

Table F3.1 Data for Noise Monitoring at Station NMS-CA-1A during Normal Working Hours (0700-1900 hours)

Date & Time	L _{eq} (5min)	L ₁₀	L ₉₀	L _{eq} (30min)
2022-09-06 10:02	68.2	70.8	62.5	67.9
2022-09-06 10:07	67.6	70.3	62.8	
2022-09-06 10:12	67.4	70.4	62.9	
2022-09-06 10:17	67.1	70.0	62.3	
2022-09-06 10:22	68.0	70.5	63.0	
2022-09-06 10:27	68.7	71.3	62.8	
2022-09-10 10:05	71.2	73.4	66.1	71.4
2022-09-10 10:10	69.5	72.0	62.7	
2022-09-10 10:15	71.7	74.2	66.6	
2022-09-10 10:20	71.8	73.4	68.4	
2022-09-10 10:25	71.7	73.9	68.1	
2022-09-10 10:30	72.0	74.1	68.7	
2022-09-16 10:08	70.2	73.5	63.3	71.9
2022-09-16 10:13	70.9	74.2	63.9	
2022-09-16 10:18	72.1	75.1	64.4	
2022-09-16 10:23	72.5	75.6	62.8	
2022-09-16 10:28	72.4	75.1	67.5	
2022-09-16 10:33	72.9	75.5	64.6	
2022-09-22 9:55	66.3	68.1	60.8	66.7
2022-09-22 10:00	66.4	69.6	60.8	
2022-09-22 10:05	65.5	67.8	61.5	
2022-09-22 10:10	67.0	70.5	61.7	
2022-09-22 10:15	66.5	69.3	61.9	
2022-09-22 10:20	68.1	70.0	62.3	
2022-09-28 9:05	68.2	70.7	64.0	67.7
2022-09-28 9:10	67.5	70.7	62.9	
2022-09-28 9:15	68.4	71.2	64.1	
2022-09-28 9:20	66.9	69.3	63.1	
2022-09-28 9:25	69.0	71.5	63.1	
2022-09-28 9:30	65.4	68.0	61.9	

Figure F3.1 Graphical Presentation for Noise Monitoring at Station NMS-CA-1A

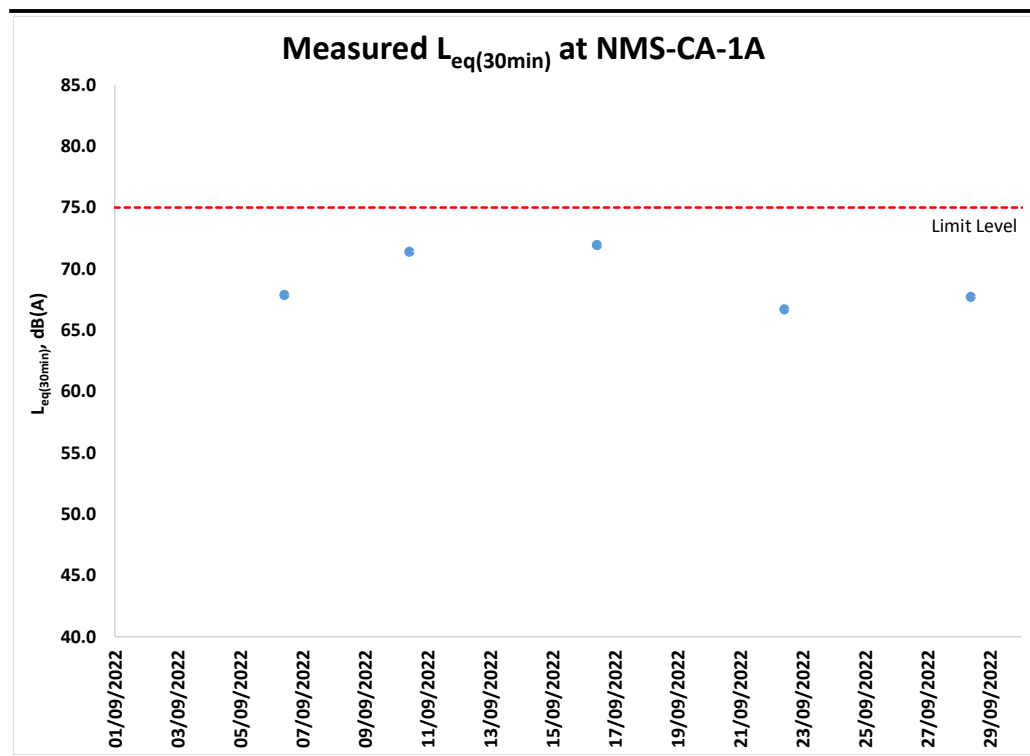


Table F3.2 Data for Noise Monitoring at Station NMS-CA-4 during Normal Working Hours (0700-1900 hours)

Date & Time	L _{eq} (5min)	L ₁₀	L ₉₀	L _{eq} (30min)
2022-09-06 9:23	66.6	68.8	63.8	66.3
2022-09-06 9:28	65.1	66.7	62.9	
2022-09-06 9:33	67.4	70.8	62.8	
2022-09-06 9:38	65.8	68.5	62.8	
2022-09-06 9:43	66.7	68.3	63.0	
2022-09-06 9:48	65.7	68.2	62.6	65.6
2022-09-10 9:24	64.4	66.7	61.1	
2022-09-10 9:29	63.7	66.5	61.2	
2022-09-10 9:34	68.5	72.6	61.6	
2022-09-10 9:39	63.2	65.0	61.1	
2022-09-10 9:44	65.1	67.3	62.8	65.4
2022-09-10 9:49	66.1	71.2	61.9	
2022-09-16 9:20	64.7	66.7	62.5	
2022-09-16 9:25	65.1	66.7	62.5	
2022-09-16 9:30	66.2	68.8	63.3	
2022-09-16 9:35	65.5	67.5	62.4	65.7
2022-09-16 9:40	65.4	67.9	62.7	
2022-09-16 9:45	65.3	68.1	62.3	
2022-09-22 9:15	64.5	66.6	61.7	
2022-09-22 9:20	66.3	69.4	62.0	
2022-09-22 9:25	65.7	67.8	62.5	64.4
2022-09-22 9:30	66.2	68.3	63.2	
2022-09-22 9:35	64.7	67.1	62.2	
2022-09-22 9:40	66.4	68.4	62.7	
2022-09-28 9:44	63.4	67.0	58.6	
2022-09-28 9:49	64.6	67.8	60.4	64.4
2022-09-28 9:54	64.9	68.9	61.1	
2022-09-28 9:59	65.0	67.4	61.1	
2022-09-28 10:04	64.7	66.4	61.6	
2022-09-28 10:09	63.7	65.7	61.6	

Figure F3.2 Graphical Presentation for Noise Monitoring at Station NMS-CA-4

